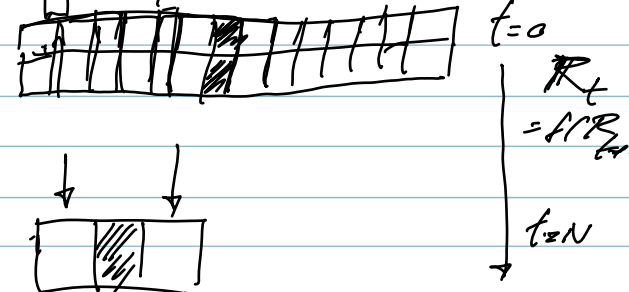
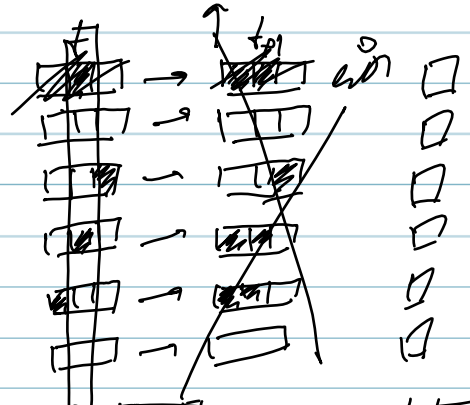
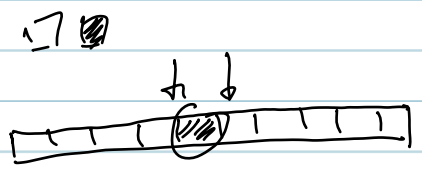
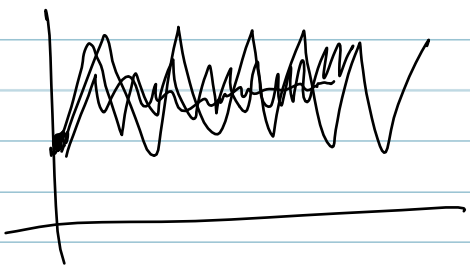
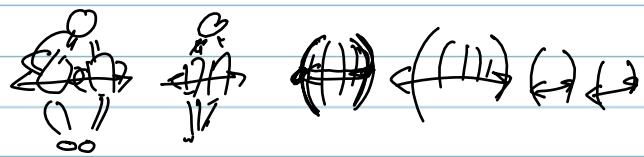
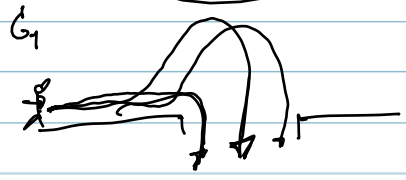
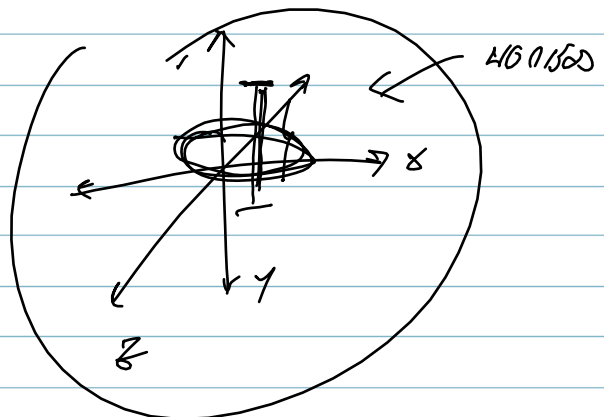
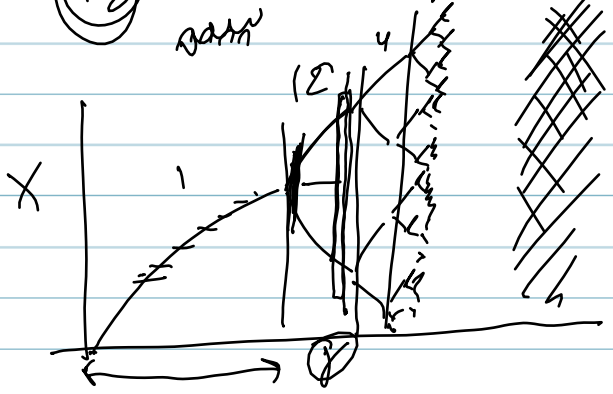


$\alpha, \beta$  : charakter von  $\mu$  (random walk)

$$x_t = \sum_{i=1}^t x_{t-i} (1 - \alpha)^{i-1}$$

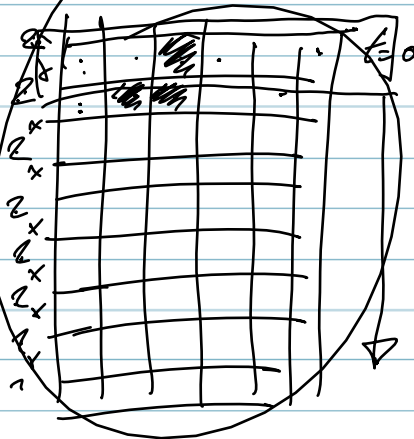
$x_0$  ← start (random start)  
dann



0 = □  
1 = ■

pattern vor change

000	⇒	0
001	⇒	1
010	⇒	1
011	⇒	0
100	⇒	1
101	⇒	1
110	⇒	0
111	⇒	0



Cellular Automata

of  $\mu$  (random walk)

01101100

